



Nano-Metre Industrial Limited

ADD.:14F,Zhongyi Building,  
No.1040,Caoyang Rd, Shanghai China 200063  
TEL: +86-21-52281268  
FAX: +86-21-52281233  
EMAIL: sales@nmsafety.com  
HTTP: www.nmsafety.com



Nano-Metre Industrial Limited  
Safety Glove Since 1998



## Introduction

Nano-Metre Industrial Limited was established in 1998, which has headquarters in Shanghai and three factories in Jiangxi, Jiangsu and Shandong province.

Today Nano-Metre has become one of the leading manufactures in safety field. With more than 600 experienced employees, 15 modern auto-production lines and over 1000 advanced auto-matic knitting machines in the factory, Nano-Metre is capable of developing and producing professional PU dipping gloves, Nitrile dipping gloves, Latex dipping gloves ,PVC gloves and mechanical gloves for customers.

Now our market covers Europe, North America, South America, Australia and Asia.

We have been paying high attention to the quality of our products and service to customers. In order to meet customers' requirements, we have been cooperating with CTC, SATRA and other test labs for more than 10 years and got CE certificates for most of our gloves.

It is really honored to have you as our customers and accompany our successful growth. We will keep making more efforts to supply higher level of products and better service to you.

We sincerely welcome you to visit our Shanghai office and our factories.



## EN standards for protective gloves

- CAT I Glove covers the minimal risks when the glove is used for comfort only. If the job presents any kind of danger, the worker has to be equipped with a CAT II or III.
- CAT II Glove have been tested and certified by an independent notified testing company. They comply to mechanical risks, a type test according to EN388, directive 89/686EEC.
- CAT III Glove used in hazardous environments and significant, irreversible risk for serious injury.
- EN 420 Basic requirements for gloves. Here points are glove sizes, PH, chromium (VI) content set or dexterity

EN 407 Protection against heat and fire (for example, welding gloves)

EN 511 Protection against cold  
a. resistant to convective cold  
b. resistant to contact cold  
c. water permeability

EN 388 Mechanical risks

EN 374 Bacteriological contamination

2242 CX

- Impact P, F, X
- Cut (TDM-100Test) A-F
- Puncture 0-4
- Tear 0-4
- Cut (Coup test) 0-5
- Abrasion 0-4

Chemical dangers

Our or your logo



CE mark



EN 388



EN388 mark



4543 DX

EN388 data

Size: 9

Size number

Art number

Art. NY1350



### Cut level 1

Item No: **NY1350AC-HY01**  
 Liner: 13 gauge nylon  
 Palm: Nitrile, sandy finish, Anti vibration padding  
 Back: TPR, Magic Buckle  
 Color: Hi-viz yellow & Black  
 Size: 7, 8, 9, 10, 11  
 Features: Anti vibration, Anti-oil, Anti-impact, Anti-slip  
 Application: Oil & Gas, Mining, Automotive, Heavy Equipment Operation



### Cut level 1

Item No: **NY1350AC-HY02**  
 Liner: 13 gauge nylon  
 Palm: Nitrile, sandy finish  
 Back: TPR  
 Color: Hi-viz yellow & Black  
 Size: 7, 8, 9, 10, 11  
 Features: Anti-oil, Anti-impact, Anti-slip  
 Application: Oil & Gas, Mining, Automotive, Heavy Equipment Operation



### Cut level 1

Item No: **NY1350FRB-AC**  
 Liner: 15 gauge nylon & spandex  
 Palm: Nitrile, micro foam finish  
 Back: TPR  
 Color: Grey & Black  
 Size: 7, 8, 9, 10, 11  
 Features: Breathable palm, Anti-oil, Anti-impact, Anti-slip  
 Application: Oil & Gas, Mining, Automotive, Craft



### Cut level 1

Item No: **NM10902AC-BLK**  
 Liner: 10 gauge polyester  
 Palm: Latex, crinkle finish  
 Back: TPR, Magic Buckle  
 Color: Black  
 Size: 7, 8, 9, 10, 11  
 Features: Anti-impact, Anti-slip  
 Application: Mining, Automotive, Heavy Equipment Operation, Sharp Tool Handling, Abrasive Material Handling



### Cut level 1

Item No: **NM010AC-OR03**  
 Liner: 10 gauge acrylic  
 Palm: Foam Latex  
 Back: TPR  
 Color: Hi-viz yellow & Orange  
 Size: 7, 8, 9, 10, 11  
 Features: Anti-impact, Anti-slip, Warm fleece  
 Application: Construction, Mining, Automotive, Heavy Equipment Operation



### Cut level 1

Item No: **NM007AC-GN/OR**  
 Liner: 7 gauge acrylic  
 Palm: Foam Latex  
 Back: TPR  
 Color: Green & Orange  
 Size: 7, 8, 9, 10, 11  
 Features: Anti-impact, Anti-slip, Warm fleece  
 Application: Construction, Mining, Automotive, Heavy Equipment Operation



### Cut level D

Item No: **DY1350AC-GR/BLK**  
 Liner: 13 gauge nylon and glassfiber and HPPE  
 Palm: Nitrile, smooth finish  
 Back: TPR  
 Color: Grey & Black  
 Size: 7, 8, 9, 10, 11  
 Features: Anti-cut, Anti-impact, Anti-oil, Anti-slip  
 Application: Oil & Gas, Mining, Automotive, Heavy Equipment Operation, Sharp Tool Handling, Abrasive Material Handling





### Cut level E

Item No: **DY1350AC-H**  
 Liner: 13 gauge nylon and glassfiber and HPPE  
 Palm: Nitrile, sandy finish, Anti vibration padding  
 Back: TPR, Magic Buckle  
 Color: Hi-viz yellow & Black  
 Size: 7, 8, 9, 10, 11  
 Norm: EN 420, EN 388: 4544EP  
 Features: Anti vibration, Anti-cut, Anti-impact, Anti-oil, Anti-slip  
 Application: Oil & Gas, Mining, Automotive, Heavy Equipment Operation, Sharp Tool Handling, Abrasive Material Handling



EN388:2016  
  
 4544 EP



### Cut level D

Item No: **DY1350AC-HY01**  
 Liner: 13 gauge nylon and glassfiber and HPPE  
 Palm: Foam nitrile  
 Back: TPR  
 Color: Hi-viz yellow & Black  
 Size: 7, 8, 9, 10, 11  
 Features: Anti-cut, Anti-impact, Anti-oil, Anti-slip  
 Application: Oil & Gas, Mining, Automotive, Heavy Equipment Operation, Sharp Tool Handling, Abrasive Material Handling



### Cut level E

Item No: **DY1350AC-OR01**  
 Liner: 13 gauge nylon and glassfiber and HPPE  
 Palm: Nitrile, sandy finish, Anti vibration padding  
 Back: TPR, Magic Buckle  
 Color: Orange & Black  
 Size: 7, 8, 9, 10, 11  
 Features: Anti vibration, Anti-cut, Anti-impact, Anti-slip  
 Application: Oil & Gas, Mining, Automotive, Heavy Equipment Operation, Sharp Tool Handling, Abrasive Material Handling



### Cut level E

Item No: **DY1350AC-OR02**  
 Liner: 13 gauge nylon and glassfiber and HPPE  
 Palm: Nitrile, sandy finish  
 Back: TPR  
 Color: Orange & Black  
 Size: 7, 8, 9, 10, 11  
 Features: Anti vibration, Anti-cut, Anti-impact, Anti-slip  
 Application: Oil & Gas, Mining, Automotive, Heavy Equipment Operation, Sharp Tool Handling, Abrasive Material Handling



### Cut level E

Item No: **DY1350AC-OR03**  
 Liner: 13 gauge nylon and glassfiber and HPPE  
 Palm: Nitrile, sandy finish  
 Back: TPR  
 Color: Grey & Orange  
 Size: 7, 8, 9, 10, 11  
 Features: Anti-cut, Anti-impact, Anti-oil, Anti-slip  
 Application: Oil & Gas, Mining, Automotive, Heavy Equipment Operation, Sharp Tool Handling, Abrasive Material Handling



### Cut level E

Item No: **DY1350AC-R**  
 Liner: 13 gauge nylon and glassfiber and HPPE  
 Palm: Nitrile, sandy finish, Anti vibration padding  
 Back: TPR  
 Color: Grey & Red  
 Size: 7, 8, 9, 10, 11  
 Features: Anti vibration, Anti-cut, Anti-impact, Anti-slip  
 Application: Oil & Gas, Mining, Automotive, Heavy Equipment Operation, Sharp Tool Handling, Abrasive Material Handling



### Cut level E

Item No: **DY1350DF-AC02**  
 Liner: 15 gauge nylon, HPPE, glassfiber + 7 gauge black acrylic  
 Palm: Nitrile, micro foam finish  
 Back: TPR  
 Color: Blue & Black  
 Size: 7, 8, 9, 10, 11  
 Features: Anti-cut, Anti-impact, Anti-oil, Anti-slip, Warm fleece  
 Application: Oil & Gas, Mining, Automotive, Heavy Equipment Operation, Sharp Tool Handling, Abrasive Material Handling



Warm fleece liner



### Cut level C

Item No: **DY1350AC-BLK**  
 Liner: 13 gauge nylon and glassfiber and HPPE liner  
 Palm: Nitrile on palm, sandy finish  
 Back: TPR  
 Color: Grey & Black  
 Size: 7, 8, 9, 10, 11  
 Norm: EN 420, EN 388: 4343  
 Features: Anti-cut, Anti-impact, Anti-oil, Anti-slip  
 Application: Oil & Gas, Mining, Automotive, Heavy Equipment Operation, Sharp Tool Handling, Abrasive Material Handling



### Cut level C

Item No: **DY110-PU-RF**  
 Liner: 13 gauge nylon and glassfiber and HPPE  
 Palm: PU coating, Anti vibration pad  
 Color: Grey  
 Size: 7, 8, 9, 10, 11  
 Features: Anti vibration, Anti-slip, Anti-cut  
 Application: Automotive, Heavy Equipment Operation, Sharp Tool Handling, Abrasive Material Handling



### Cut level C

Item No: **DY110-PU-HAC**  
 Liner: 13 gauge nylon and glassfiber and HPPE  
 Palm: PU, Anti vibration padding  
 Back: TPR, Magic Buckle  
 Color: Grey  
 Size: 7, 8, 9, 10, 11  
 Features: Anti vibration, Anti-cut, Anti-impact, Anti-slip  
 Application: Automotive, Heavy Equipment Operation, Sharp Tool Handling, Abrasive Material Handling



### Cut level D

Item No: **DM1350AC-GR/BLK**  
 Liner: 13 gauge nylon and glassfiber and HPPE  
 Palm: Latex, crinkle finish, Anti vibration padding  
 Back: TPR, Magic Buckle  
 Color: Grey & Black  
 Size: 7, 8, 9, 10, 11  
 Features: Anti vibration, Anti-cut, Anti-impact, Anti-slip  
 Application: Mining, Automotive, Heavy Equipment Operation, Sharp Tool Handling, Abrasive Material Handling



### Cut level 1

Item No: **MC101**  
 Palm: Synthetic leather, EVA padding, Velcro closure  
 Back: Stretch spandex fabric, Anti-impact TPR  
 Color: Black  
 Size: 7, 8, 9, 10, 11  
 Features: Dexterity, Sensitivity, Anti vibration, Anti-impact, Anti-slip  
 Application: Multipurpose, Maintenance and Repair, Equipment Operation, Automotive, Outdoors



### Cut level 1

Item No: **MC102**  
 Palm: Synthetic leather  
 Back: Stretch spandex fabric, TPR, Velcro closure  
 Color: Yellow & Black  
 Size: 7, 8, 9, 10, 11  
 Features: Dexterity, Sensitivity, Anti-impact, Anti-slip  
 Application: Multipurpose, Maintenance and Repair, Equipment Operation, Automotive, Outdoors



### Cut level 1

Item No: **MC107**  
 Palm: Synthetic leather, Silicon dots  
 Back: Stretch-spandex fabric, Anti-impact TPR  
 Color: Orange & Grey & Black  
 Size: 7, 8, 9, 10, 11  
 Features: Dexterity, Sensitivity, Anti-impact, Anti-slip  
 Application: Multipurpose, Maintenance and Repair, Equipment Operation, Automotive, Outdoors



### Cut level 1

Item No: **SP001**  
 Palm: Synthetic leather, Extra padding for better durability  
 Back: Stretch spandex fabric, Velcro cuff  
 Color: Grey & Black  
 Size: 7, 8, 9, 10, 11  
 Features: Dexterity, Sensitivity, Finger folding available, Anti-slip  
 Application: Multipurpose, Maintenance and Repair, Equipment Operation, Automotive, Outdoors



### Cut level 1

Item No: **MC302**  
 Palm: Synthetic leather  
 Back: Stretch spandex fabric, Velcro closure  
 Color: Red & Black  
 Size: 7, 8, 9, 10, 11  
 Features: Dexterity, Sensitivity, Anti-slip  
 Application: Multipurpose, Maintenance and Repair, Equipment Operation, Automotive, Outdoors



### Cut level 1

Item No: **SP007**  
 Palm: Synthetic leather, Anti-vibration padding  
 Back: Stretch spandex fabric, Velcro closure  
 Color: Black & Red  
 Size: 7, 8, 9, 10, 11  
 Features: Dexterity, Sensitivity, Flexible  
 Application: Automotive, Bicycle, Outdoor, Sports



### Cut level 1

Item No: **MC305**  
 Palm: Synthetic leather, Velcro closure,  
 Back: Stretch spandex fabric  
 Color: Yellow & Black  
 Size: 7, 8, 9, 10, 11  
 Features: Dexterity, Sensitivity, Good durability  
 Application: Multipurpose, Maintenance and Repair, Equipment Operation, Automotive, Outdoors



### Cut level B

Item No: **KV007**  
 Material: 7 gauge Aramid Fibers knitted glove  
 Color: Yellow  
 Size: 7, 8, 9, 10, 11  
 Features: Anti-cut, Anti-slip  
 Application: Mechanic, Automotive assembly, Agriculture, Craft,



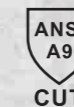
### Cut level B

Item No: **KV007CS**  
 Liner: 7 gauge Aramid Fibers  
 Palm: Cow split leather  
 Color: Yellow & Grey  
 Size: 7, 8, 9, 10, 11  
 Features: Anti-cut, Anti-slip  
 Application: Mechanic, Automotive assembly, Forest, Agriculture, Craft, Glass handling

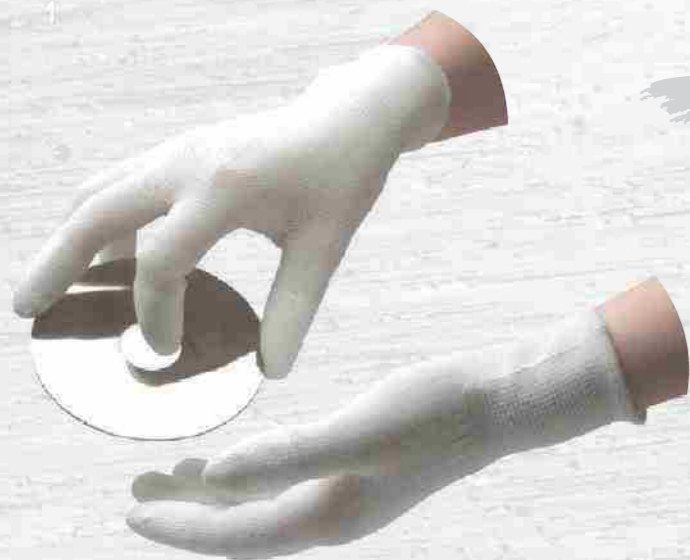


### Cut level F

Item No.: **DY007CS**  
 Liner: 7 gauge strong high cut resistant fiber  
 Palm: Cow split leather  
 Color: Orange/grey  
 Size: 7, 8, 9, 10, 11  
 Features: High cut resistant, Anti-slip, High abrasion resistant  
 Application: Mechanic, Glass handling, Forest, Construction



## DMF Recycle Equipment for PU gloves Protect environment



### Cut level 1

Item No: **PU1310-W**  
 Liner: 13 gauge nylon  
 Coating: PU finger coated  
 Color: White  
 Size: 6, 7, 8, 9, 10, 11  
 Features: Dexterity, Sensitivity  
 Application: Electronic assembly, Automotive assembly, Safety inspection



### Cut level 1

Item No: **PU1350-W(nylon liner)**  
**PU1350P-W(polyester liner)**  
 Liner: 13 gauge nylon or polyester  
 Coating: PU palm coated  
 Color: White  
 Size: 6, 7, 8, 9, 10, 11  
 Norm: EN420, EN388:4131X(nylon) or EN388:3121X(polyester)  
 Features: Dexterity, Sensitivity  
 Application: Electronic assembly, Automotive assembly, Safety inspection



### Cut level 1

Item No: **PU1350-DG(nylon liner)**  
**PU1350P-DG(polyester liner)**  
 Liner: 13 gauge nylon or polyester  
 Coating: PU palm coated  
 Color: Grey  
 Size: 6, 7, 8, 9, 10, 11  
 Norm: EN420, EN388:4131X(nylon) or EN388:3121X(polyester)  
 Features: Dexterity, Sensitivity  
 Application: Electronic assembly, Automotive assembly, Safety inspection



### Cut level 1

Item No: **PU1350-BLK(nylon liner)**  
**PU1350P-BLK(polyester liner)**  
 Liner: 13 gauge nylon or polyester  
 Coating: PU palm coated  
 Color: Black  
 Size: 6, 7, 8, 9, 10, 11  
 Norm: EN420, EN388:4131X(nylon) or EN388:3121X(polyester)  
 Features: Dexterity, Sensitivity  
 Application: Electronic assembly, Automotive assembly, Safety inspection





**Cut level 1**

Item No: **PU1350-NV/BLK(nylon liner)**  
**PU1350P-NV/BLK(polyester liner)**  
 Liner: 13 gauge nylon or polyester  
 Coating: PU palm coated  
 Color: Navy blue & Black  
 Size: 6, 7, 8, 9, 10, 11  
 Nrom: EN420, EN388:4131X(nylon) or EN388:3131X(polyester)  
 Features: Dexterity, Sensitivity  
 Application: Electronic assembly, Automotive assembly, Safety inspection



**Cut level 1**

Item No: **PU1350U3-PP**  
 Liner: 13 gauge U3 polyester  
 Coating: PU palm coated  
 Color: Purple & White  
 Size: 6, 7, 8, 9, 10, 11  
 Features: Dexterity, Sensitivity  
 Application: Safety inspection, Gardening, Daily work



**Cut level 1**

Item No: **PU1350U3-OR**  
 Liner: 13 gauge U3 polyester  
 Coating: PU palm coated  
 Color: Orange & White  
 Size: 6, 7, 8, 9, 10, 11  
 Features: Dexterity, Sensitivity  
 Application: Safety inspection, Gardening, Daily work



**Cut level 1**

Item No: **PU1350U3-GN**  
 Liner: 13 gauge U3 polyester  
 Coating: PU palm coated  
 Color: Green & White  
 Size: 6, 7, 8, 9, 10, 11  
 Features: Dexterity, Sensitivity, Touch screen optional  
 Application: Safety inspection, Gardening, Daily work



**Cut level 1**



Item No: **PU1350FP**  
 Liner: 13 gauge polyester  
 Coating: PU palm coated  
 Color: Flower printed  
 Size: 6, 7, 8, 9, 10, 11  
 Features: Dexterity, Sensitivity  
 Application: Safety inspection, Gardening, Daily work



**Cut level 1**

Item No: **WPU1350-LG**  
 Liner: 13 gauge nylon  
 Coating: Water based PU palm coated  
 Color: Light grey  
 Size: 6, 7, 8, 9, 10, 11  
 Features: Dexterity, Sensitivity, DMF free  
 Application: Electronic assembly, Automotive assembly, Safety inspection



**Cut level 1**

Item No: **PU20.07F**  
 Liner: 13 gauge nylon and carbon  
 Coating: PU fingertips coated  
 Color: Grey & White  
 Size: 6, 7, 8, 9, 10, 11  
 Features: Dexterity, Sensitivity, Anti-static  
 Application: Electronic assembly, Automotive assembly, Safety inspection

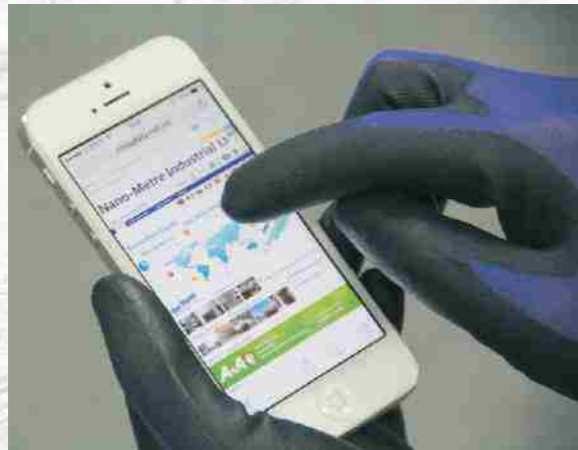


**Cut level 1**

Item No: **PU20.07P**  
 Liner: 13 gauge nylon and carbon  
 Coating: PU palm coated  
 Color: Grey & White  
 Size: 6, 7, 8, 9, 10, 11  
 Features: Dexterity, Sensitivity, Anti-static  
 Application: Electronic assembly, Automotive assembly, Safety inspection







### Cut level 1

Item No: **PU1850-NV/BLK**  
 Liner: 18 gauge nylon  
 Coating: PU palm coated  
 Color: Navy blue & Black  
 Size: 6, 7, 8, 9, 10, 11  
 Norm: EN 420, EN 388: 2110X  
 Features: Dexterity, Sensitivity, Super thin, Perfect fit, Touch screen optional  
 Application: Electronic assembly, Automotive assembly, Safety inspection



### Cut level 1

Item No: **PU1850T-HG**  
 Liner: 18 gauge nylon  
 Coating: PU palm coated  
 Color: Hi-viz green  
 Size: 6, 7, 8, 9, 10, 11  
 Features: Dexterity, Sensitivity, Super thin, Perfect fit, Touch screen  
 Application: Electronic assembly, Automotive assembly, Safety inspection



### Cut level B

Item No: **DY110PU**  
 Liner: 13 gauge nylon and HPPE  
 Coating: PU palm coated  
 Color: White  
 Size: 7, 8, 9, 10, 11  
 Norm: EN 420, EN 388: 4X42B  
 Features: Anti-cut, Anti-slip  
 Application: Mechanic, Automotive assembly, Forest, Agriculture, Craft, Handling sharp parts.



### Cut level B

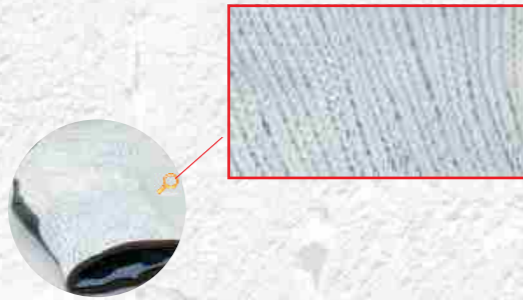
Item No: **DY110DG-PU**  
 Liner: 13 gauge nylon and HPPE  
 Coating: PU palm coated  
 Color: Grey  
 Size: 7, 8, 9, 10, 11  
 Norm: EN 420, EN 388: 4X42B  
 Features: Anti-cut, Anti-slip  
 Application: Mechanic, Automotive assembly, Forest, Agriculture, Craft, Handling sharp parts.



### Cut level B

Item No: **DY1850PU-H**  
 Liner: 18 gauge nylon and glassfiber and HPPE  
 Coating: PU palm coated  
 Color: Grey  
 Size: 7, 8, 9, 10, 11  
 Norm: EN 420, EN388:4X41B  
 Features: Anti-cut, Anti-slip  
 Application: Mechanic, Automotive assembly, Forest, Agriculture, Craft, Handling sharp parts.





### Cut level C

Item No: **DY110-PU-HS**  
 Liner: 13 gauge nylon and glassfiber and HPPE  
 Coating: PU palm coated  
 Color: Blue & Black  
 Size: 7, 8, 9, 10, 11  
 Norm: EN 420, EN 388: 4X42C  
 Features: Anti-cut, Anti-slip  
 Application: Mechanic, Automotive assembly, Forest, Agriculture, Craft, Handling sharp parts.



### Cut level C

Item No: **DY110-PU-H**  
 Liner: 13 gauge nylon and glassfiber and HPPE  
 Coating: PU palm coated  
 Color: Grey & Black  
 Size: 7, 8, 9, 10, 11  
 Norm: EN 420, EN 388: 4X42C  
 Features: Anti-cut, Anti-slip  
 Application: Mechanic, Automotive assembly, Forest, Agriculture, Craft, Handling sharp parts.



### Cut level D

Item No: **DY110-WPU-H**  
 Liner: 13 gauge nylon and glassfiber and HPPE  
 Coating: Water based PU palm coated  
 Color: Grey & Hi-viz Yellow  
 Size: 7, 8, 9, 10, 11  
 Norm: EN 420, EN 388: 4X43D  
 Features: Anti-cut, Anti-slip  
 Application: Mechanic, Automotive assembly, Forest, Agriculture, Craft, Handling sharp parts.



### Cut level 1

Item No: **NY1350-LG (nylon liner)**  
**NY1350P-LG (polyester liner)**  
 Liner: 13 gauge nylon or polyester  
 Coating: Nitrile palm coated  
 Color: White & Grey  
 Size: 7, 8, 9, 10, 11  
 Norm: EN420, EN388:4121X(nylon) or EN388:3121X(polyester)  
 Features: Dexterity, Sensitivity, Anti-slip, Anti-oil  
 Application: Manufacturing, Oil industries, Automotive assembly, Safety inspection



### Cut level 1

Item No: **NY1350-GR (nylon liner)**  
**NY1350P-GR (polyester liner)**  
 Liner: 13 gauge nylon or polyester  
 Coating: Nitrile palm coated  
 Color: Grey  
 Size: 7, 8, 9, 10, 11  
 Norm: EN420, EN388:4121X(nylon) or EN388:3121X(polyester)  
 Features: Dexterity, Sensitivity, Anti-slip, Anti-oil  
 Application: Manufacturing, Oil industries, Automotive assembly, Safety inspection



### Cut level 1

Item No: **NY1350-BLK (nylon liner)**  
**NY1350P-BLK (polyester liner)**  
 Liner: 13 gauge nylon or polyester  
 Coating: Nitrile palm coated  
 Color: Black  
 Size: 7, 8, 9, 10, 11  
 Norm: EN420, EN388:4121X(nylon) or EN388:3121X(polyester)  
 Features: Dexterity, Sensitivity, Anti-slip, Anti-oil  
 Application: Manufacturing, Oil industries, Automotive assembly, Safety inspection





### Cut level 1

Item No: **NY1350-R/BLK (nylon liner)**  
**NY1350P-R/BLK (polyester liner)**  
 Liner: 13 gauge nylon or polyester  
 Coating: Nitrile palm coated  
 Color: Red & Black  
 Size: 7, 8, 9, 10, 11  
 Features: Dexterity, Sensitivity, Anti-slip, Anti-oil  
 Application: Manufacturing, Oil industries, Automotive assembly, Safety inspection



### Cut level 1

Item No: **NY1350U3P-Y/BLK**  
 Liner: 13 gauge U3 polyester  
 Coating: Nitrile palm coated  
 Color: Yellow & Black  
 Size: 7, 8, 9, 10, 11  
 Features: Dexterity, Sensitivity, Anti-slip, Anti-oil  
 Application: Manufacturing, Oil industries, Automotive assembly, Safety inspection



### Cut level 1

Item No: **NY1350-LB/GR (nylon liner)**  
**NY1350P-LB/GR (polyester liner)**  
 Liner: 13 gauge nylon or polyester  
 Coating: Nitrile palm coated  
 Color: Light blue & Grey  
 Size: 7, 8, 9, 10, 11  
 Features: Dexterity, Sensitivity, Anti-slip, Anti-oil  
 Application: Manufacturing, Oil industries, Automotive assembly, Safety inspection, Gardening



### Cut level 1

Item No: **NY1350U3P-B/BLK**  
 Liner: 13 gauge U3 polyester  
 Coating: Nitrile palm coated  
 Color: Blue & Black  
 Size: 7, 8, 9, 10, 11  
 Features: Dexterity, Sensitivity, Anti-slip, Anti-oil  
 Application: Manufacturing, Oil industries, Automotive assembly, Safety inspection



### Cut level 1

Item No: **NY1350-PP/GR (nylon liner)**  
**NY1350P-PP/GR (polyester liner)**  
 Liner: 13 gauge nylon or polyester  
 Coating: Nitrile palm coated  
 Color: Purple & Grey  
 Size: 7, 8, 9, 10, 11  
 Features: Dexterity, Sensitivity, Anti-slip, Anti-oil  
 Application: Manufacturing, Oil industries, Automotive assembly, Safety inspection, Gardening



### Cut level 1

Item No: **NY1355-LG(nylon liner)**  
**NY1355P-LG( polyester liner)**  
 Liner: 13 gauge nylon or polyester  
 Coating: Nitrile half coated  
 Color: White & Grey  
 Size: 7, 8, 9, 10, 11  
 Norm: EN 420, EN 388: 4121X  
 Features: Dexterity, Sensitivity, Anti-slip, Anti-oil  
 Application: Manufacturing, Oil industries, Automotive assembly, Safety inspection



### Cut level 1

Item No: **NY1350FP**  
 Liner: 13 gauge polyester  
 Coating: Nitrile palm coated  
 Color: Flower printed  
 Size: 7, 8, 9, 10, 11  
 Features: Dexterity, Sensitivity, Anti-slip, Anti-oil  
 Application: Manufacturing, Oil industries, Automotive assembly, Safety inspection, Gardening



### Cut level 1

Item No: **NY1355-B(nylon liner)**  
**NY1355P-B( polyester liner)**  
 Liner: 13 gauge nylon or polyester  
 Coating: Nitrile half coated  
 Color: White & Blue  
 Size: 7, 8, 9, 10, 11  
 Features: Dexterity, Sensitivity, Anti-slip, Anti-oil  
 Application: Manufacturing, Oil industries, Automotive assembly, Safety inspection





### Cut level 1

Item No: **NY1359-LG(nylon liner)**  
**NY1359P-LG(polyester liner)**  
 Liner: 13 gauge nylon or polyester  
 Coating: Nitrile full coated  
 Color: White & Grey  
 Size: 7, 8, 9, 10, 11  
 Norm: EN 420, EN 388: 4121X  
 Features: Dexterity, Sensitivity, Anti-slip, Anti-oil  
 Application: Manufacturing, Oil industries, Automotive assembly, Safety inspection



### Cut level 1

### Sandy finish series



Item No: **NY1350S-BLK**  
 Liner: 13 gauge nylon  
 Coating: Sandy nitrile palm coated  
 Color: Black  
 Size: 7, 8, 9, 10, 11  
 Norm: EN 420, EN 388: 4121X  
 Features: Dexterity, Sensitivity, Anti-slip, Anti-oil  
 Application: Manufacturing, Oil industries, Automotive assembly, Safety inspection



### Cut level 1

Item No: **NY1359-SY(nylon liner),**  
**NY1359P-SR(polyester liner)**  
 Liner: 13 gauge nylon or polyester  
 Coating: Nitrile full coated  
 Color: White & Yellow  
 Size: 7, 8, 9, 10, 11  
 Features: Dexterity, Sensitivity, Anti-slip, Anti-oil  
 Application: Manufacturing, Oil industries, Automotive assembly, Safety inspection



### Cut level 1

Item No: **NY1350S-OR/BLK**  
 Liner: 13 gauge nylon  
 Coating: Sandy nitrile palm coated  
 Color: Orange & Black  
 Size: 7, 8, 9, 10, 11  
 Features: Dexterity, Sensitivity, Anti-slip, Anti-oil  
 Application: Manufacturing, Oil industries, Automotive assembly, Safety inspection



### Cut level 1

Item No: **NY1850-NV/BLK**  
 Liner: 18 gauge nylon  
 Coating: Nitrile palm coated  
 Color: Navy blue & Black  
 Size: 7, 8, 9, 10, 11  
 Features: Dexterity, Sensitivity, Anti-slip, Anti-oil, Super thin, Perfect fit  
 Application: Manufacturing, Oil industries, Automotive assembly, Safety inspection



### Cut level 1

Item No: **NY1350S-R/BLK**  
 Liner: 13 gauge nylon  
 Coating: Sandy nitrile palm coated  
 Color: Red & Black  
 Size: 7, 8, 9, 10, 11  
 Features: Dexterity, Sensitivity, Anti-slip, Anti-oil  
 Application: Manufacturing, Oil industries, Automotive assembly, Safety inspection



### Cut level 1

Item No: **NY1859-NV/BLK**  
 Liner: 18 gauge nylon  
 Coating: Nitrile full coated  
 Color: Navy blue  
 Size: 7, 8, 9, 10, 11  
 Features: Air-free, Dexterity, Sensitivity, Anti-slip, Anti-oil, Super thin, Perfect fit  
 Application: Manufacturing, Oil industries, Automotive assembly, Safety inspection



### Cut level 1

Item No: **NY1350S-HY/BLK**  
 Liner: 13 gauge nylon  
 Coating: Sandy nitrile palm coated  
 Color: Hi-viz yellow & black  
 Size: 7, 8, 9, 10, 11  
 Features: Dexterity, Sensitivity, Anti-slip, Anti-oil  
 Application: Manufacturing, Oil industries, Automotive assembly, Safety inspection





### Cut level 1

Item No: **NBR1350DS-HY/BLK**  
 Liner: 13 gauge nylon & 7 gauge nappy acrylic  
 Coating: Sandy nitrile palm coated  
 Color: Hi-viz yellow & black  
 Size: 7, 8, 9, 10, 11  
 Features: Dexterity, Anti-slip, Anti-oil, Winter use  
 Application: Manufacturing, Oil industries, Automotive assembly, Light duty work



### Cut level 1

Item No: **NY1350FRB**  
 Liner: 15 gauge nylon and spandex  
 Coating: High-technology foam nitrile palm coated  
 Color: Grey & Black  
 Size: 7, 8, 9, 10, 11  
 Norm: EN 420, EN 388: 4121X  
 Features: Anti-slip, Anti-oil, Flexible, Sensitivity, Water proof optional  
 Application: Manufacturing, Oil industries, Automotive assembly, Maintenance



### Cut level 1

Item No: **NBR1355DS-HY/BLK**  
 Liner: 13 gauge nylon & 7 gauge nappy acrylic  
 Coating: Sandy nitrile half coated  
 Color: Hi-viz yellow & black  
 Size: 7, 8, 9, 10, 11  
 Features: Dexterity, Anti-slip, Anti-oil, Winter use  
 Application: Manufacturing, Oil industries, Automotive assembly, Heavy duty work



### Cut level 1

Item No: **NY1350FP-BLK**  
 Liner: 13 gauge nylon  
 Coating: Textured High-technology foam nitrile  
 Color: Grey & Black  
 Size: 7, 8, 9, 10, 11  
 Features: Anti-slip, Anti-oil, Flexible, Sensitivity, Breathable  
 Application: Manufacturing, Oil industries, Automotive assembly, Maintenance



### Cut level 1

Item No: **NBR1355DS-GR/BLK**  
 Liner: 13 gauge nylon & 7 gauge nappy acrylic  
 Coating: Sandy nitrile half coated  
 Color: Grey & Black  
 Size: 7, 8, 9, 10, 11  
 Features: Dexterity, Anti-slip, Anti-oil, Winter use  
 Application: Manufacturing, Oil industries, Automotive assembly, Heavy duty work



### Cut level 1

Item No: **NY1350FP-GR/BLK**  
 Liner: 13 gauge nylon  
 Coating: Textured High-technology foam nitrile  
 Color: Grey & Black  
 Size: 7, 8, 9, 10, 11  
 Features: Anti-slip, Anti-oil, Flexible, Sensitivity, Breathable  
 Application: Manufacturing, Oil industries, Automotive assembly, Maintenance



### Cut level 1

Item No: **NBR1355DS-BLK**  
 Liner: 13 gauge nylon & 7 gauge nappy acrylic  
 Coating: Sandy nitrile half coated  
 Color: Black  
 Size: 7, 8, 9, 10, 11  
 Features: Dexterity, Anti-slip, Anti-oil, Winter use  
 Application: Manufacturing, Oil industries, Automotive assembly, Heavy duty work





### Cut level 1

Item No: **NY1350FD-BLK**  
 Liner: 15 gauge nylon and spandex  
 Coating: High-technology foam nitrile palm coated with dots  
 Color: Grey & Black  
 Size: 7, 8, 9, 10, 11  
 Norm: EN 420, EN 388: 4121X  
 Features: Anti-slip, Anti-oil, Flexible, Sensitivity  
 Application: Manufacturing, Oil industries, Automotive assembly, Maintenance



### Cut level 1

Item No: **NY1350FRBL-GR/BLK**  
 Liner: 13 gauge nylon and cotton, nappy acrylic  
 Coating: High-technology foam nitrile palm coated  
 Color: Grey & Black  
 Size: 7, 8, 9, 10, 11  
 Norm: EN 420, EN 388: 4121X  
 Features: Anti-slip, Anti-oil, Flexible, Sensitivity, Winter use  
 Application: Manufacturing, Oil industries, Automotive assembly, Maintenance



### Cut level 1

Item No: **NY1350FDA-OR**  
 Liner: 15 gauge nylon and spandex  
 Coating: High-technology foam nitrile palm coated with dots  
 Color: Orange & Black  
 Size: 7, 8, 9, 10, 11  
 Norm: EN 420, EN 388: 4121X  
 Features: Anti-slip, Anti-oil, Flexible, Sensitivity  
 Application: Manufacturing, Oil industries, Automotive assembly, Maintenance



### Cut level 1

Item No: **NY1350FRBL-BR/BLK**  
 Liner: 13 gauge nylon and spandex, nappy acrylic  
 Coating: High-technology foam nitrile palm coated  
 Color: Brown & Black  
 Size: 7, 8, 9, 10, 11  
 Norm: EN 420, EN 388: 4121X  
 Features: Anti-slip, Anti-oil, Flexible, Sensitivity, Winter use  
 Application: Manufacturing, Oil industries, Automotive assembly, Maintenance



### Cut level 1

Item No: **NY1355FD-BLK**  
 Liner: 15 gauge nylon and spandex  
 Coating: High-technology foam nitrile half coated with dots  
 Color: Grey & Black  
 Size: 7, 8, 9, 10, 11  
 Norm: EN 420, EN 388: 4121X  
 Features: Anti-slip, Anti-oil, Flexible, Sensitivity  
 Application: Manufacturing, Oil industries, Automotive assembly, Maintenance



### Cut level 1

Item No: **NY1350FSB-GR**  
 Liner: 13 gauge nylon  
 Coating: Foam nitrile palm coated  
 Color: White & Grey  
 Size: 7, 8, 9, 10, 11  
 Norm: EN 420, EN 388: 4121X  
 Features: Anti-slip, Anti-oil, Flexible, Sensitivity  
 Application: Manufacturing, Oil industries, Automotive assembly, Maintenance



### Cut level 1

Item No: **NY1359FD**  
 Liner: 15 gauge nylon and spandex  
 Coating: High-technology foam nitrile full coated with dots  
 Color: Grey & Black  
 Size: 7, 8, 9, 10, 11  
 Norm: EN 420, EN 388: 4121X  
 Features: Anti-slip, Anti-oil, Flexible, Sensitivity  
 Application: Manufacturing, Oil industries, Automotive assembly, Maintenance



### Cut level 1

Item No: **NY1350FSB-BLK**  
 Liner: 13 gauge nylon  
 Coating: Foam nitrile palm coated  
 Color: Black  
 Size: 7, 8, 9, 10, 11  
 Features: Anti-slip, Anti-oil, Flexible, Sensitivity  
 Application: Manufacturing, Oil industries, Automotive assembly, Maintenance





### Cut level 1

Item No: **BB1350FSB-GN**  
 Liner: 13 gauge bamboo fiber  
 Coating: Foam nitrile palm coated  
 Color: Green  
 Size: 7, 8, 9, 10, 11  
 Features: Anti-slip, Anti-oil, Flexible, Sensitivity  
 Application: Manufacturing, Oil industries, Automotive assembly, Maintenance



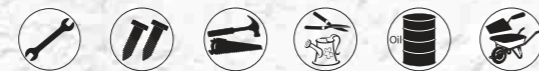
### Cut level 1

Item No: **NY1350F-GR**  
 Liner: 13 gauge nylon  
 Coating: Foam nitrile palm coated  
 Color: White & Grey  
 Size: 7, 8, 9, 10, 11  
 Norm: EN 420, EN 388: 4121X  
 Features: Anti-slip, Anti-oil, Flexible, Sensitivity  
 Application: Manufacturing, Oil industries, Automotive assembly, Maintenance



### Cut level 1

Item No: **NY1350FP-GR/BLK**  
 Liner: 15 gauge nylon and spandex  
 Coating: Foam nitrile palm coated, emboss grip on palm  
 Color: Grey & Black  
 Size: 7, 8, 9, 10, 11  
 Features: Anti-slip, Anti-oil, Flexible, Sensitivity  
 Application: Manufacturing, Oil industries, Automotive assembly, Maintenance



### Cut level 1

Item No: **NY1355F-GR/GR**  
 Liner: 13 gauge nylon  
 Coating: Foam nitrile half coated  
 Color: Grey  
 Size: 7, 8, 9, 10, 11  
 Features: Anti-slip, Anti-oil, Flexible, Sensitivity  
 Application: Manufacturing, Oil industries, Automotive assembly, Maintenance



### Cut level 1

Item No: **NY1359DC-B/BLK**  
 Liner: 13 gauge nylon  
 Coating: Double coated, smooth nitrile full coated, sandy nitrile on palm  
 Color: White & Blue & Black  
 Size: 7, 8, 9, 10, 11  
 Norm: EN 420, EN 388: 4121X  
 Features: Anti-slip, Anti-oil, Flexible, Sensitivity  
 Application: Manufacturing, Oil industries, Automotive assembly, Maintenance



### Cut level 1

Item No: **NY1355DC-FP**  
 Liner: 15 gauge nylon and spandex  
 Coating: Foam nitrile double layer half coated, emboss grip on palm  
 Color: Blue & Black  
 Size: 7, 8, 9, 10, 11  
 Features: Anti-slip, Anti-oil, Flexible, Sensitivity  
 Application: Manufacturing, Oil industries, Automotive assembly, Maintenance



### Cut level 1

Item No: **NY1359DC-FP**  
 Liner: 15 gauge nylon and spandex  
 Coating: Foam nitrile double layer full coated, emboss grip on palm  
 Color: Blue & Black  
 Size: 7, 8, 9, 10, 11  
 Features: Anti-slip, Anti-oil, Flexible, Sensitivity  
 Application: Manufacturing, Oil industries, Automotive assembly, Maintenance





### Cut level 1

Item No: **NBR1260-Y**  
 Liner: Interlock  
 Coating: Nitrile half coated  
 Color: Yellow  
 Size: 7, 8, 9, 10, 11  
 Norm: EN 420, EN 388: 3111X  
 Features: Anti-slip, Anti-oil  
 Application: Manufacturing, Oil industries, Automotive assembly, Maintenance



### Cut level 1

Item No: **NBR1530-HQ**  
 Liner: Jersey, knit wrist  
 Coating: Nitrile full coated, three time dipped  
 Color: Blue  
 Size: 8, 9, 10, 11  
 Norm: EN 420, EN 388: 4111X  
 Features: Anti-slip, Anti-oil  
 Application: Manufacturing, Oil industries, Automotive assembly, Maintenance, Heavy-duty work



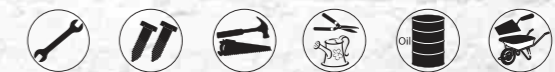
### Cut level 1

Item No: **NBR1260-B**  
 Liner: Interlock  
 Coating: Nitrile half coated  
 Color: Blue  
 Size: 7, 8, 9, 10, 11  
 Norm: EN 420, EN 388: 3111X  
 Features: Anti-slip, Anti-oil  
 Application: Manufacturing, Oil industries, Automotive assembly, Maintenance



### Cut level 1

Item No: **NBR4530-HQ**  
 Liner: Jersey, safety cuff  
 Coating: Nitrile full coated, three time dipped  
 Color: Blue  
 Size: 8, 9, 10, 11  
 Norm: EN 420, EN 388: 4111X  
 Features: Anti-slip, Anti-oil  
 Application: Manufacturing, Oil industries, Automotive assembly, Maintenance, Heavy-duty work



### Cut level 1

Item No: **NBR1560**  
 Liner: Interlock  
 Coating: Nitrile full coated  
 Color: Blue  
 Size: 7, 8, 9, 10, 11  
 Norm: EN 420, EN 388: 3111X  
 Features: Anti-slip, Anti-oil  
 Application: Manufacturing, Oil industries, Automotive assembly, Maintenance



### Cut level 1

Item No: **NBR1230**  
 Liner: Jersey, knit wrist  
 Coating: Nitrile half coated  
 Color: Blue  
 Size: 8, 9, 10, 11  
 Norm: EN 420, EN 388: 4111X  
 Features: Anti-slip, Anti-oil  
 Application: Manufacturing, Oil industries, Automotive assembly, Maintenance, Heavy-duty work







### Cut level 1

Item No: **NBR1530**  
 Liner: Jersey, knit wrist  
 Coating: Nitrile full coated  
 Color: Blue  
 Size: 8, 9, 10, 11  
 Norm: EN 420, EN 388: 4111X  
 Features: Anti-slip, Anti-oil  
 Application: Manufacturing, Oil industries, Automotive assembly, Maintenance, Heavy-duty work



### Cut level 1

Item No: **NBR4230**  
 Liner: Jersey, safety cuff  
 Coating: Nitrile half coated  
 Color: Blue  
 Size: 8, 9, 10, 11  
 Norm: EN 420, EN 388: 4111X  
 Features: Anti-slip, Anti-oil  
 Application: Manufacturing, Oil industries, Automotive assembly, Maintenance, Heavy-duty work



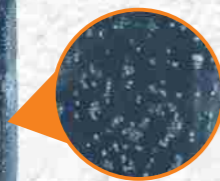
### Cut level 1

Item No: **NBR4530**  
 Liner: Jersey, safety cuff  
 Coating: Nitrile full coated  
 Color: Blue  
 Size: 8, 9, 10, 11  
 Norm: EN 420, EN 388: 4111X  
 Features: Anti-slip, Anti-oil  
 Application: Manufacturing, Oil industries, Automotive assembly, Maintenance, Heavy-duty work



### Cut level 1

Item No: **NBR4230R**  
 Liner: Jersey, safety cuff  
 Coating: Nitrile half coated, rough finish  
 Color: Blue  
 Size: 10  
 Features: Anti-slip, Anti-oil  
 Application: Manufacturing, Oil industries, Automotive assembly, Maintenance, Heavy-duty work



### Cut level 1

Item No: **NBR4530T**  
 Liner: Jersey and terry, canvas cuff  
 Coating: Nitrile full coated  
 Color: Blue  
 Size: 10  
 Features: Anti-slip, Anti-oil  
 Application: Manufacturing, Oil industries, Automotive assembly, Maintenance, Heavy-duty work



### Cut level 1

Item No: **NBR4530FC**  
 Liner: Jersey, nitrile impregnated safety cuff  
 Coating: Nitrile full coated  
 Color: Blue  
 Size: 10  
 Features: Anti-slip, Anti-oil  
 Application: Manufacturing, Oil industries, Automotive assembly, Maintenance, Heavy-duty work



### Cut level 1

Item No: **NBR4530FC-W**  
 Liner: 3 layers (interlock, sponge, jersey), nitrile impregnated safety cuff  
 Coating: Nitrile full coated  
 Color: Blue  
 Size: 11  
 Features: Anti-slip, Anti-oil  
 Application: Manufacturing, Oil industries, Automotive assembly, Maintenance, Heavy-duty work



### Cut level 1

Item No: **NBR7560-OR**  
 Liner: Interlock  
 Coating: Nitrile full coated, gauntlet  
 Color: Orange  
 Size: 8, 9, 10, 11  
 Length: 27cm, 30cm, 35cm  
 Features: Anti-slip, Anti-oil  
 Application: Manufacturing, Oil industries, Automotive assembly, Maintenance, Heavy duty work



### Cut level 1



Item No: **NBR7560-B**  
 Liner: Interlock  
 Coating: Nitrile full coated, gauntlet  
 Color: Blue  
 Size: 8, 9, 10, 11  
 Length: 27cm, 30cm, 35cm  
 Features: Anti-slip, Anti-oil  
 Application: Manufacturing, Oil industries, Automotive assembly, Maintenance, Heavy duty work



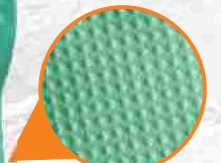
### Cut level 1



Item No: **NBR7560S-B**  
 Liner: Cotton  
 Coating: Nitrile full coated, gauntlet, sandy finish on palm  
 Color: Blue  
 Size: 8, 9, 10, 11  
 Length: 26cm, 30cm  
 Features: Anti-slip, Flexible, Chemical resistant  
 Application: Manufacturing, Chemical industrial, Maintenance, Light duty work



### Cut level 1



Item No: **US11205**  
 Liner: Flocklined  
 Coating: Nitrile full coated, diamond grip on palm  
 Color: Green  
 Size: 7, 8, 9, 10, 11  
 Length: 13 inch  
 Thickness: 15mil, 18mil, 20mil available  
 Norm: EN 420, EN 388: 3101X  
 Features: Anti-slip, Flexible, Chemical resistant  
 Application: Manufacturing, Chemical industrial, Maintenance



### Cut level 1



Item No: **US11205UL**  
 Liner: Unlined  
 Coating: Nitrile full coated, diamond grip on palm  
 Color: Blue  
 Size: 7, 8, 9, 10, 11  
 Length: 13 inch  
 Thickness: 15mil, 18mil, 20mil available  
 Features: Anti-slip, Flexible, Chemical resistant  
 Application: Manufacturing, Chemical industrial, Maintenance



### Cut level 1



Item No: **US11204**  
 Liner: Flocklined  
 Coating: Neoprene and latex full coated, diamond grip on palm  
 Color: Yellow & Blue  
 Size: 7, 8, 9, 10, 11  
 Length: 13 inch  
 Thickness: 18 mil  
 Features: Anti-slip, Flexible, Chemical resistant  
 Application: Manufacturing, Chemical industrial, Maintenance



### Cut level 1



Item No: **US11209**  
 Liner: Flocklined  
 Coating: Neoprene full coated, diamond grip on palm  
 Color: Black  
 Size: 7, 8, 9, 10, 11  
 Length: 13 inch  
 Thickness: 20 mil  
 Features: Anti-slip, Flexible, Chemical resistant  
 Application: Manufacturing, Chemical industrial, Maintenance



### Cut level 1



Item No: **US11207**  
 Discription: Double color latex industrial glove  
 Color: Black & Orange  
 Size: 7, 8, 9, 10, 11  
 Length: 13 inch  
 Weight: 90g/pair (other weight is available)  
 Features: Anti-slip, Flexible, Chemical resistant  
 Application: Manufacturing, Chemical industrial, Maintenance

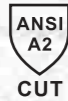


# Nitrile Gloves



## Cut level B

Item No: **DY1350FRB-BLK**  
 Liner: 13 gauge nylon and HPPE  
 Coating: High-technology foam nitrile palm coated  
 Color: Grey & Black  
 Size: 7, 8, 9, 10, 11  
 Features: Anti-cut, Anti-slip, Anti-oil  
 Application: Mechanic, Automotive assembly, Forest, Craft, Handling sharp parts.



## Cut level B

Item No: **DY1350F-GR**  
 Liner: 13 gauge nylon and HPPE  
 Coating: Foam nitrile palm coated  
 Color: White & Grey  
 Size: 7, 8, 9, 10, 11  
 Features: Anti-cut, Anti-slip, Anti-oil  
 Application: Mechanic, Automotive assembly, Forest, Agriculture, Craft, Handling sharp parts.



## Cut level B

Item No: **DY1350FP-HY/B**  
 Liner: 13 gauge nylon and HPPE  
 Coating: Foam nitrile palm coated, emboss grip surface  
 Color: Hi-viz green & Blue  
 Size: 7, 8, 9, 10, 11  
 Features: Anti-cut, Anti-slip, Anti-oil  
 Application: Mechanic, Automotive assembly, Forest, Craft, Handling sharp parts.



## Cut level B

Item No: **DY1350FRBL-HY/BLK**  
 Liner: 13 gauge nylon and HPPE and nappy acrylic  
 Coating: High-technology foam nitrile palm coated  
 Color: Hi-viz yellow & Black  
 Size: 7, 8, 9, 10, 11  
 Features: Anti-cut, Anti-slip, Anti-oil, Warm fleece  
 Application: Mechanic, Automotive assembly, Forest, Craft, Handling sharp parts.



# Nitrile Gloves



## Cut level C

Item No: **DY1850S-HY/BLK**  
 Liner: 18 gauge nylon and glassfiber and HPPE and carbon  
 Coating: Sandy nitrile palm coated  
 Color: Green & Black  
 Size: 7, 8, 9, 10, 11  
 Features: Anti-cut, Anti-slip, Anti-static  
 Application: Mechanic, Automotive assembly, Safety inspection, Craft, Electronic, Handling sharp parts.



## Cut level C

Item No: **DY1850S-B/BLK**  
 Liner: 18 gauge nylon and glassfiber and HPPE and carbon  
 Coating: Sandy nitrile palm coated  
 Color: Blue & Black  
 Size: 7, 8, 9, 10, 11  
 Features: Anti-cut, Anti-slip, Anti-static  
 Application: Mechanic, Automotive assembly, Safety inspection, Craft, Electronic, Handling sharp parts.



## Cut level C

Item No: **DY1850S-GR/OR**  
 Liner: 18 gauge nylon and glassfiber and HPPE and carbon  
 Coating: Sandy nitrile palm coated  
 Color: Grey & Orange  
 Size: 7, 8, 9, 10, 11  
 Features: Anti-cut, Anti-slip, Anti-static  
 Application: Mechanic, Automotive assembly, Safety inspection, Craft, Electronic, Handling sharp parts.



## Cut level C

Item No: **KV1350U3-BLK**  
 Liner: 13 gauge Aramid Fibers and Lycra knitted U3  
 Coating: High-technology foam nitrile palm coated  
 Color: Yellow & Black  
 Size: 7, 8, 9, 10, 11  
 Norm: EN 420, EN 388: 4X32B  
 Features: Anti-cut, Anti-slip, Heat resistant  
 Application: Mechanic, Automotive assembly, Forest, Agriculture, Craft, Handling sharp parts.



# Nitrile Gloves



## Cut level B

Item No: **KV1350LC-BLK**  
 Liner: 13 gauge Aramid Fibers and Lycra  
 Coating: High-technology foam nitrile palm coated  
 Color: Yellow & Black  
 Size: 7, 8, 9, 10, 11  
 Norm: EN 420, EN 388: 4X32B  
 Features: Anti-cut, Anti-slip, Heat resistant  
 Application: Mechanic, Automotive assembly, Forest, Agriculture, Craft, Handling sharp parts.



## Cut level C

Item No: **DY1350-H**  
 Liner: 13 gauge nylon and glassfiber and HPPE  
 Coating: Nitrile palm coated  
 Color: Grey & Black  
 Size: 7, 8, 9, 10, 11  
 Norm: EN 420, EN 388: 4X42C  
 Features: Anti-cut, Anti-slip, Anti-oil  
 Application: Mechanic, Automotive assembly, Forest, Agriculture, Craft, Handling sharp parts.



## Cut level C

Item No: **DY1350S-BLK**  
 Liner: 13 gauge nylon and glassfiber and HPPE  
 Coating: Sandy nitrile palm coated  
 Color: Grey & Black  
 Size: 7, 8, 9, 10, 11  
 Features: Anti-cut, Anti-slip, Anti-oil  
 Application: Mechanic, Automotive assembly, Craft, Electronic, Handling sharp parts.



## Cut level C

Item No: **DY1350F-H**  
 Liner: 13 gauge nylon and glassfiber and HPPE  
 Coating: Sandy nitrile palm coated  
 Color: Hi-viz yellow & Black  
 Size: 7, 8, 9, 10, 11  
 Norm: EN 420, EN 388: 4X42C, ANSI: 4  
 Features: Anti-cut, Anti-slip, Anti-oil  
 Application: Mechanic, Automotive assembly, Forest, Craft, Handling sharp parts.



# Nitrile Gloves



## Cut level C

Item No: **DY1310FD-BLK**  
 Liner: 13 gauge nylon and glassfiber and HPPE  
 Coating: Nitrile coated fingertips and dots on palm  
 Color: Grey & Black  
 Size: 7, 8, 9, 10, 11  
 Features: Anti-cut, Anti-slip, Anti-oil  
 Application: Mechanic, Automotive assembly, Forest, Agriculture, Craft, Handling sharp parts.



## Cut level C

Item No: **DY1350FD-BLK**  
 Liner: 13 gauge nylon and glassfiber and HPPE  
 Coating: High-technology foam nitrile with dots on palm  
 Color: Grey & Black  
 Size: 7, 8, 9, 10, 11  
 Features: Anti-cut, Anti-slip, Anti-oil  
 Application: Mechanic, Automotive assembly, Forest, Agriculture, Craft, Handling sharp parts.



## Reinforcement

## Cut level C

Item No: **DY1850FRB** **Super Flex**  
 Liner: 18 gauge nylon and glassfiber and HPPE and carbon  
 Coating: Micro foam nitrile palm coated  
 Color: Green & Black  
 Size: 7, 8, 9, 10, 11  
 Features: Anti-cut, Anti-slip, Reinforcement on thumb crotch, Anti-oil  
 Application: Mechanic, Automotive assembly, Craft, Electronic, Handling sharp parts.



# Nitrile Gloves



## Cut level C

Item No: **DY1850F-H**  
 Liner: 18 gauge nylon and glassfiber and HPPE  
 Coating: High-technology foam nitrile palm coated  
 Color: Blue & Black  
 Size: 7, 8, 9, 10, 11  
 Norm: EN 420, EN 388: 4X42C  
 Features: Anti-cut, Anti-slip, Anti-oil, reinforce on thumb crotch  
 Application: Mechanic, Automotive assembly, Craft, Electronic, Handling sharp parts.

Reinforcement



## Cut level C

Item No: **DY1355DC-B/BLK**  
 Liner: 13 gauge nylon and glassfiber and HPPE  
 Coating: Double coated, smooth nitrile half coated, sandy nitrile on palm  
 Color: Grey & Blue & Black  
 Size: 7, 8, 9, 10, 11  
 Features: Anti-cut, Anti-slip, Anti-oil  
 Application: Mechanic, Automotive assembly, Forest, Craft, Handling sharp parts.



## Cut level C

Item No: **DY1359DC-B/BLK**  
 Liner: 13 gauge nylon and glassfiber and HPPE  
 Coating: Double coated, smooth nitrile full coated, sandy nitrile on palm  
 Color: Grey & Blue & Black  
 Size: 7, 8, 9, 10, 11  
 Features: Anti-cut, Anti-slip, Anti-oil, Water proof  
 Application: Mechanic, Automotive assembly, Forest, Craft, Handling sharp parts.



## Cut level C

Item No: **DY1355FD-BLK**  
 Liner: 13 gauge nylon and glassfiber and HPPE  
 Coating: High-technology foam nitrile half coated, nitrile dots on palm  
 Color: Grey & Black  
 Size: 7, 8, 9, 10, 11  
 Features: Anti-cut, Anti-slip, Anti-oil  
 Application: Mechanic, Automotive assembly, Forest, Agriculture, Craft, Handling sharp parts.



# Nitrile Gloves



## Cut level C

Item No: **DY1355DF-B/BLK**  
 Liner: 13 gauge nylon and glassfiber and HPPE and cotton  
 Coating: Smooth nitrile half coated for first layer, high-technology foam nitrile for second layer  
 Color: Grey & Blue & Black  
 Size: 7, 8, 9, 10, 11  
 Features: Anti-cut, Anti-slip, Anti-oil, Water proof  
 Application: Mechanic, Automotive assembly, Forest, Craft, Handling sharp parts.



## Cut level C

Item No: **DY1359DF-B/BLK**  
 Liner: 13 gauge nylon and glassfiber and HPPE and cotton  
 Coating: Smooth nitrile full coated for first layer, high-technology foam nitrile for second layer  
 Color: Grey & Blue & Black  
 Size: 7, 8, 9, 10, 11  
 Features: Anti-cut, Anti-slip, Anti-oil, Water proof  
 Application: Mechanic, Automotive assembly, Forest, Craft, Handling sharp parts.



## Cut level C

Item No: **DY1359-B**  
 Liner: 13 gauge nylon and glassfiber and HPPE and cotton  
 Coating: Smooth nitrile full coated  
 Color: Grey & Blue  
 Size: 7, 8, 9, 10, 11  
 Features: Anti-cut, Anti-slip, Anti-oil, Water proof  
 Application: Mechanic, Automotive assembly, Forest, Craft, Handling sharp parts.



## Cut level C

Item No: **DY1380-B**  
 Liner: 13 gauge nylon and glassfiber and HPPE and cotton  
 Coating: Smooth nitrile full coated, gauntlet  
 Color: Blue  
 Size: 7, 8, 9, 10, 11  
 Length: 27cm, 30cm  
 Features: Anti-cut, Anti-slip, Anti-oil, Water proof  
 Application: Mechanic, Automotive assembly, Forest, Craft, Handling sharp parts.





Cut level 1

Item No: **NM1350-DG/GR(nylon)**  
**NM1350P-DG(polyester)**  
 Liner: 13 gauge nylon or polyester  
 Coating: Latex crinkle palm coated  
 Color: Grey  
 Size: 7, 8, 9, 10, 11  
 Features: Durability, Dexterity, Sensitivity, Anti-slip  
 Application: Manufacturing, Construction, Assembly, Wood industries, Gardening



Cut level 1

Item No: **NM1350-GR/BLK (nylon)**  
**NM1350P-GR/BLK(polyester)**  
 Liner: 13 gauge nylon or polyester  
 Coating: Latex crinkle palm coated  
 Color: Grey & Black  
 Size: 7, 8, 9, 10, 11  
 Norm: EN 420, EN 388: 3131X  
 Features: Durability, Dexterity, Sensitivity, Anti-slip  
 Application: Manufacturing, Construction, Assembly, Wood industries, Gardening



Cut level 1

Item No: **NM1350P-R/BLK**  
 Liner: 13 gauge polyester  
 Coating: Latex crinkle palm coated  
 Color: Red & Black  
 Size: 7, 8, 9, 10, 11  
 Norm: EN 420, EN 388: 2121X  
 Features: Durability, Dexterity, Sensitivity, Anti-slip  
 Application: Manufacturing, Construction, Assembly, Wood industries, Gardening



Cut level 1

Item No: **NM1350L-GR/BLK**  
 Liner: 13 gauge nylon and acrylic  
 Coating: Latex crinkle palm coated  
 Color: Grey & Black  
 Size: 7, 8, 9, 10, 11  
 Features: Durability, Dexterity, Sensitivity, Anti-slip, Winter use  
 Application: Manufacturing, Construction, Assembly, Wood industries, Gardening



Application



Cut level 1

Item No: **NM1350F-LG/PP**  
 Liner: 13 gauge nylon  
 Coating: Foam latex palm coated  
 Color: Grey & Purple  
 Size: 7, 8, 9, 10, 11  
 Features: Durability, Dexterity, Sensitivity, Anti-slip  
 Application: Manufacturing, Construction, Assembly, Wood industries, Gardening



Cut level 1

Item No: **NM1350F-OR/BLK**  
 Liner: 13 gauge nylon  
 Coating: Foam latex palm coated  
 Color: Orange & Black  
 Size: 7, 8, 9, 10, 11  
 Features: Durability, Dexterity, Sensitivity, Anti-slip  
 Application: Manufacturing, Construction, Assembly, Wood industries, Gardening



Cut level 1

Item No: **NM1350F-HY/BLK**  
 Liner: 13 gauge nylon  
 Coating: Foam latex palm coated  
 Color: Hi-viz yellow & Black  
 Size: 7, 8, 9, 10, 11  
 Norm: EN 420, EN 388: 2131X  
 Features: Durability, Dexterity, Sensitivity, Anti-slip  
 Application: Manufacturing, Construction, Assembly, Wood industries, Gardening





### Cut level 1

Item No: **NM1350F-GR/GN**  
 Liner: 13 gauge nylon  
 Coating: Foam latex palm coated  
 Color: Grey & Green  
 Size: 7, 8, 9, 10, 11  
 Features: Durability, Dexterity, Sensitivity, Anti-slip  
 Application: Manufacturing, Construction, Assembly, Wood industries, Gardening



### Cut level 1

Item No: **NM1350F-BLK/PP**  
 Liner: 13 gauge nylon  
 Coating: Foam latex palm coated  
 Color: Black & Purple  
 Size: 7, 8, 9, 10, 11  
 Features: Durability, Dexterity, Sensitivity, Anti-slip  
 Application: Manufacturing, Construction, Assembly, Wood industries, Gardening



### Cut level 1

Item No: **BB1350F-GN**  
 Liner: 13 gauge bamboo  
 Coating: Foam latex palm coated  
 Color: Green  
 Size: 7, 8, 9, 10, 11  
 Features: Durability, Dexterity, Sensitivity, Anti-slip  
 Application: Manufacturing, Construction, Assembly, Wood industries, Gardening



### Cut level 1

Item No: **NM1355F-CL**  
 Liner: 13 gauge nylon  
 Coating: Foam latex 3/4 coated, with 4 claws  
 Color: Green & Black  
 Size: 7, 8, 9, 10, 11  
 Features: Dexterity, Sensitivity, 4 claws for digging & planting  
 Application: Gardening



### Cut level 1

Item No: **NM1350S-R/GN**  
 Liner: 13 gauge nylon  
 Coating: Latex sandy finish palm coated  
 Color: Red & Green  
 Size: 7, 8, 9, 10, 11  
 Norm: EN 420, EN 388: 2131X  
 Features: Durability, Dexterity, Sensitivity, Anti-slip  
 Application: Manufacturing, Construction, Assembly, Wood industries, Gardening



### Cut level 1

Item No: **NM1350S-HY/BLK**  
 Liner: 13 gauge nylon  
 Coating: Double layer latex coated, sandy finish on palm  
 Color: Hi-viz yellow & Black  
 Size: 7, 8, 9, 10, 11  
 Norm: EN 420, EN 388: 2131X  
 Features: Durability, Dexterity, Sensitivity, Anti-slip, Water proof  
 Application: Manufacturing, Construction, Assembly, Wood industries, Gardening



### Cut level 1

Item No: **NM10902-Y/OR**  
 Liner: 10 gauge polycotton  
 Coating: Latex crinkle palm coated  
 Color: Yellow & Orange  
 Size: 7, 8, 9, 10, 11  
 Norm: EN 420, EN 388: 2142X  
 Features: Durability, Dexterity, Anti-slip  
 Application: Manufacturing, Construction, Assembly, Wood industries, Gardening



### Cut level 1

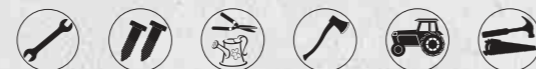
Item No: **NM10902-GR/B**  
 Liner: 10 gauge polycotton  
 Coating: Latex crinkle palm coated  
 Color: Grey & Blue  
 Size: 7, 8, 9, 10, 11  
 Norm: EN 420, EN 388: 2142X  
 Features: Durability, Dexterity, Anti-slip  
 Application: Manufacturing, Construction, Assembly, Wood industries, Gardening





### Cut level 1

Item No: **NM10902-Y/B**  
 Liner: 10 gauge polycotton  
 Coating: Latex crinkle palm coated  
 Color: Yellow & Blue  
 Size: 7, 8, 9, 10, 11  
 Norm: EN 420, EN 388: 2142X  
 Features: Durability, Dexterity, Anti-slip  
 Application: Manufacturing, Construction, Assembly, Wood industries, Gardening



### Cut level 1

Item No: **NM10902-GR/GR**  
 Liner: 10 gauge polycotton  
 Coating: Latex crinkle palm coated  
 Color: Grey  
 Size: 7, 8, 9, 10, 11  
 Features: Durability, Dexterity, Anti-slip  
 Application: Manufacturing, Construction, Assembly, Wood industries, Gardening



### Cut level 1

Item No: **NM10902-HY/BLK**  
 Liner: 10 gauge polycotton  
 Coating: Latex crinkle palm coated  
 Color: Hi-viz-yellow & Black  
 Size: 7, 8, 9, 10, 11  
 Features: Durability, Dexterity, Anti-slip  
 Application: Manufacturing, Construction, Assembly, Wood industries, Gardening



### Cut level 1

Item No: **NM10902-BLK**  
 Liner: 10 gauge polycotton  
 Coating: Latex crinkle palm coated  
 Color: Black  
 Size: 7, 8, 9, 10, 11  
 Norm: EN 420, EN 388: 2142X  
 Features: Durability, Dexterity, Anti-slip  
 Application: Manufacturing, Construction, Assembly, Wood industries, Gardening



### Cut level 1

Item No: **NM10902M-GR/B**  
 Liner: 10 gauge polycotton, buckle on wrist  
 Coating: Latex crinkle palm coated  
 Color: Grey & Blue  
 Size: 7, 8, 9, 10, 11  
 Features: Durability, Dexterity, Anti-slip  
 Application: Manufacturing, Construction, Assembly, Wood industries, Gardening



### Cut level 1

Item No: **NM10902T-Y/GN**  
 Liner: 10 gauge polycotton  
 Coating: Latex crinkle palm and thumb coated  
 Color: Yellow & Green  
 Size: 7, 8, 9, 10, 11  
 Features: Durability, Dexterity, Anti-slip  
 Application: Manufacturing, Construction, Assembly, Wood industries, Gardening



### Cut level 1

Item No: **NM10920-GR/B**  
 Liner: 10 gauge polycotton  
 Coating: Latex crinkle half coated  
 Color: Grey & Blue  
 Size: 7, 8, 9, 10, 11  
 Features: Durability, Dexterity, Anti-slip  
 Application: Manufacturing, Construction, Assembly, Wood industries, Gardening



### Cut level 1

Item No: **NM10902F-GR/BLK**  
 Liner: 10 gauge polycotton  
 Coating: Foam latex palm coated  
 Color: Grey & Black  
 Size: 7, 8, 9, 10, 11  
 Features: Durability, Dexterity, Anti-slip  
 Application: Manufacturing, Construction, Assembly, Wood industries, Gardening







### Cut level 1

Item No: **NM10902ES-GR/BLK**  
 Liner: 10 gauge polycotton, Economic style  
 Coating: Smooth latex palm coated  
 Color: Grey & Black  
 Size: 7, 8, 9, 10, 11  
 Features: Durability, Dexterity, Anti-slip  
 Application: Manufacturing, Construction, Assembly, Wood industries, Gardening



### Cut level 1

Item No: **NM10902E-GR/B**  
 Liner: 10 gauge polycotton, Economic style  
 Coating: Latex crinkle palm coated  
 Color: Grey & Blue  
 Size: 7, 8, 9, 10, 11  
 Features: Durability, Dexterity, Anti-slip  
 Application: Manufacturing, Construction, Assembly, Wood industries, Gardening



### Cut level 1

Item No: **NM10902E-GR/GR**  
 Liner: 10 gauge polycotton, Economic style  
 Coating: Latex crinkle palm coated  
 Color: Grey  
 Size: 7, 8, 9, 10, 11  
 Features: Durability, Dexterity, Anti-slip  
 Application: Manufacturing, Construction, Assembly, Wood industries, Gardening



### Cut level 1

Item No: **NM10902E-GR/BLK**  
 Liner: 10 gauge polycotton, Economic style  
 Coating: Latex crinkle palm coated  
 Color: Grey & Black  
 Size: 7, 8, 9, 10, 11  
 Norm: EN 420, EN 388: 2142X  
 Features: Durability, Dexterity, Anti-slip  
 Application: Manufacturing, Construction, Assembly, Wood industries, Gardening



### Cut level 1

Item No: **NM10902E-Y/OR**  
 Liner: 10 gauge polycotton, Economic style  
 Coating: Latex crinkle palm coated  
 Color: Yellow & Orange  
 Size: 7, 8, 9, 10, 11  
 Norm: EN 420, EN 388: 2142X  
 Features: Durability, Dexterity, Anti-slip  
 Application: Manufacturing, Construction, Assembly, Wood industries, Gardening



### Cut level 1

Item No: **NM10902E-Y/GN**  
 Liner: 10 gauge polycotton, Economic style  
 Coating: Latex crinkle palm coated  
 Color: Yellow & Green  
 Size: 7, 8, 9, 10, 11  
 Features: Durability, Dexterity, Anti-slip  
 Application: Manufacturing, Construction, Assembly, Wood industries, Gardening



### Cut level 1

Item No: **NM1010E-R**  
 Liner: 10 gauge natural polycotton, Economic style  
 Coating: Latex palm coated  
 Color: White & Red  
 Size: 7, 8, 9, 10, 11  
 Features: Durability, Dexterity, Anti-slip  
 Application: Manufacturing, Construction, Assembly, Wood industries, Gardening



### Cut level 1

Item No: **NM1010-B**  
 Liner: 10 gauge natural polycotton  
 Coating: Latex palm coated  
 Color: White & Blue  
 Size: 7, 8, 9, 10, 11  
 Features: Durability, Dexterity, Anti-slip  
 Application: Manufacturing, Construction, Assembly, Wood industries, Gardening





**Cut level 1**

Item No: **NM10930-HY/BLK**  
 Liner: 10 gauge acrylic nappy inside  
 Coating: Latex crinkle palm coated  
 Color: Hi-viz yellow & Black  
 Size: 7, 8, 9, 10, 11  
 Features: Durability, Dexterity, Anti-slip, Winter use  
 Application: Manufacturing, Construction, Assembly, Wood industries, Gardening



**Cut level 1**

Item No: **NM10930-DR/BLK**  
 Liner: 10 gauge acrylic nappy inside  
 Coating: Latex crinkle palm coated  
 Color: Red & Black  
 Size: 7, 8, 9, 10, 11  
 Features: Durability, Dexterity, Anti-slip, Winter use  
 Application: Manufacturing, Construction, Assembly, Wood industries, Gardening



**Cut level 1**

Item No: **NM10930-GR/BLK**  
 Liner: 10 gauge acrylic nappy inside  
 Coating: Latex crinkle palm coated  
 Color: Grey & Black  
 Size: 7, 8, 9, 10, 11  
 Features: Durability, Dexterity, Anti-slip, Winter use  
 Application: Manufacturing, Construction, Assembly, Wood industries, Gardening



**Cut level 1**

Item No: **NM10930F-OR/BLK**  
 Liner: 10 gauge acrylic nappy inside  
 Coating: Foam latex palm coated  
 Color: Orange & Black  
 Size: 7, 8, 9, 10, 11  
 Features: Durability, Dexterity, Anti-slip, Winter use  
 Application: Manufacturing, Construction, Assembly, Wood industries, Gardening



**Cut level 1**

Item No: **NM007E-OR/BLK**  
 Liner: 7 gauge nappy polyester, Economic style  
 Coating: Latex crinkle palm coated  
 Color: Orange & Black  
 Size: 7, 8, 9, 10, 11  
 Features: Durability, Dexterity, Anti-slip, Winter use  
 Application: Manufacturing, Construction, Assembly, Wood industries, Gardening



**Cut level 1**

Item No: **NM007-OR/BLK**  
 Liner: 7 gauge acrylic  
 Coating: Latex crinkle palm and thumb coated  
 Color: Orange & Black  
 Size: 7, 8, 9, 10, 11  
 Features: Durability, Dexterity, Anti-slip, Winter use  
 Application: Manufacturing, Construction, Assembly, Wood industries, Gardening



**Cut level 1**

Item No: **NM007-OR/B**  
 Liner: 7 gauge acrylic  
 Coating: Latex crinkle palm and thumb coated  
 Color: Orange & Blue  
 Size: 7, 8, 9, 10, 11  
 Norm: EN 420, EN 388: 1231, EN 511  
 Features: Durability, Dexterity, Anti-slip, Winter use  
 Application: Manufacturing, Construction, Assembly, Wood industries, Gardening



**Cut level 1**

Item No: **NM007M-HY/B**  
 Liner: 7 gauge acrylic, buckle on wrist  
 Coating: Latex crinkle palm and thumb coated  
 Color: Hi-viz yellow & Blue  
 Size: 7, 8, 9, 10, 11  
 Features: Durability, Dexterity, Anti-slip, Winter use  
 Application: Manufacturing, Construction, Assembly, Wood industries, Gardening





### Cut level 1

Item No: **NM007F-HY/BLK**  
 Liner: 7 gauge acrylic nappy inside  
 Coating: Foam latex palm coated  
 Color: Hi-viz yellow & Black  
 Size: 7, 8, 9, 10, 11  
 Features: Durability, Dexterity, Anti-slip, Winter use  
 Application: Manufacturing, Construction, Assembly, Wood industries, Gardening



### Cut level 2

Item No: **NM1355DF-BLK**  
 Liner: 13 gauge nylon and 7 gauge nappy acrylic  
 Coating: Foam latex half coated  
 Color: Black  
 Size: 7, 8, 9, 10, 11  
 Norm: EN 420, EN 388: 2241X  
 Features: Durability, Dexterity, Anti-slip, Winter use  
 Application: Manufacturing, Construction, Assembly, Wood industries, Gardening



### Cut level 1

Item No: **NM007F-B/BLK**  
 Liner: 7 gauge acrylic nappy inside  
 Coating: Foam latex palm coated  
 Color: Blue & Black  
 Size: 7, 8, 9, 10, 11  
 Features: Durability, Dexterity, Anti-slip, Winter use  
 Application: Manufacturing, Construction, Assembly, Wood industries, Gardening



### Cut level 2

Item No: **NM1355DF-R/BLK**  
 Liner: 13 gauge nylon and 7 gauge nappy acrylic  
 Coating: Foam latex half coated  
 Color: Red & Black  
 Size: 7, 8, 9, 10, 11  
 Features: Durability, Dexterity, Anti-slip, Winter use  
 Application: Manufacturing, Construction, Assembly, Wood industries, Gardening



### Cut level 1

Item No: **NM0075-HY/B**  
 Liner: 7 gauge acrylic nappy inside  
 Coating: Latex crinkle half coated  
 Color: Hi-viz yellow & Blue  
 Size: 7, 8, 9, 10, 11  
 Features: Durability, Dexterity, Anti-slip, Winter use  
 Application: Manufacturing, Construction, Assembly, Wood industries, Gardening



### Cut level 2

Item No: **NM1359DC-R/BLK**  
 Liner: 13 gauge nylon and 7 gauge nappy acrylic  
 Coating: Smooth latex for first layer, foam latex for second layer  
 Color: Orange & Black  
 Size: 7, 8, 9, 10, 11  
 Features: Durability, Dexterity, Anti-slip, Winter use  
 Application: Manufacturing, Construction, Assembly, Wood industries, Gardening





### Cut level 1

Item No: **RB1260-W/GN**  
 Liner: Cotton interlock  
 Coating: Latex crinkle half coated, knit wrist  
 Color: White & Green  
 Size: 10  
 Features: Durability, Anti-slip, Winter use  
 Application: Manufacturing, Construction, Assembly, Wood industries



### Cut level 1

Item No: **RB1230**  
 Liner: Jersey  
 Coating: Latex crinkle half coated, knit wrist  
 Color: White & Yellow  
 Size: 10  
 Features: Durability, Anti-slip, Winter use  
 Application: Manufacturing, Construction, Assembly, Wood industries, Heavy duty work



### Cut level 1

Item No: **RB1530**  
 Liner: Jersey  
 Coating: Latex crinkle full coated, knit wrist  
 Color: White & Yellow  
 Size: 10  
 Features: Durability, Anti-slip, Winter use  
 Application: Manufacturing, Construction, Assembly, Wood industries, Heavy duty work



### Cut level 1

Item No: **RB4230**  
 Liner: Jersey  
 Coating: Latex crinkle half coated, safety cuff  
 Color: White & Yellow  
 Size: 10  
 Features: Durability, Anti-slip, Winter use  
 Application: Manufacturing, Construction, Assembly, Wood industries, Heavy duty work



### Cut level 1

Item No: **RB4530**  
 Liner: Jersey  
 Coating: Latex crinkle full coated, safety cuff  
 Color: White & Yellow  
 Size: 10  
 Features: Durability, Anti-slip, Winter use  
 Application: Manufacturing, Construction, Assembly, Wood industries, Heavy duty work



### Cut level 1

Item No: **RB7530-Y**  
 Liner: Jersey  
 Coating: Latex crinkle full coated, gauntlet  
 Color: Yellow  
 Size: 10  
 Length: 27cm, 30cm, 35cm  
 Features: Durability, Anti-slip, Winter use  
 Application: Manufacturing, Construction, Assembly, Wood industries, Heavy duty work



### Cut level 1

Item No: **RB7530-GN**  
 Liner: Jersey  
 Coating: Latex crinkle full coated, gauntlet  
 Color: Green  
 Size: 10  
 Length: 27cm, 30cm, 35cm  
 Features: Durability, Anti-slip, Winter use  
 Application: Manufacturing, Construction, Assembly, Wood industries, Heavy duty work



### Cut level 1

Item No: **NM07603**  
 Liner: 7 gauge polycotton  
 Palm: Laminated rubber  
 Color: White & Orange  
 Size: 10  
 Features: Durability, Dexterity, Anti-slip  
 Application: Manufacturing, Construction, Assembly, Wood industries





### Cut level 1



Item No: **US01202-S**  
 Liner: Spray flocklined  
 Coating: Latex  
 Color: Yellow  
 Size: 7, 8, 9, 10, 11  
 Features: Water proof  
 Application: Daily work, Household working

### Cut level 1



Item No: **US01202-D**  
 Liner: Dipping flocklined  
 Coating: Latex  
 Color: Pink  
 Size: 7, 8, 9, 10, 11  
 Features: Water proof  
 Application: Daily work, Household working

### Cut level B



Item No: **NM10909KV**  
 Liner: 10 gauge Aramid Fibers  
 Coating: Latex crinkle palm coated  
 Color: Yellow & Blue  
 Size: 7, 8, 9, 10, 11  
 Features: Anti-cut, Anti-slip  
 Application: Mechanic, Automotive assembly, Forest, Agriculture, Craft, Glass handling



### Cut level B

Item No: **NM10909TKV**  
 Liner: 10 gauge Aramid Fibers and steel wire  
 Coating: Latex crinkle palm and thumb coated  
 Color: Yellow & Blue  
 Size: 7, 8, 9, 10, 11  
 Features: Anti-cut, Anti-slip  
 Application: Mechanic, Automotive assembly, Forest, Agriculture, Craft, Glass handling



### Cut level C

Item No: **DY1350NM-H**  
 Liner: 13 gauge nylon and glassfiber and HPPE  
 Coating: Latex crinkle palm coated  
 Color: Grey & Black  
 Size: 7, 8, 9, 10, 11  
 Norm: EN 420, EN 388: 4X43D, ANSI: 4  
 Features: Anti-cut, Anti-slip  
 Application: Mechanic, Automotive assembly, Forest, Agriculture, Craft, Glass handling, Handling sharp parts.



### Cut level C



Item No: **DY1350NM-HB**  
 Liner: 13 gauge nylon and glassfiber and HPPE  
 Coating: Latex crinkle palm coated  
 Color: Grey & Blue  
 Size: 7, 8, 9, 10, 11  
 Features: Anti-cut, Anti-slip  
 Application: Mechanic, Automotive assembly, Forest, Agriculture, Craft, Glass handling, Handling sharp parts.



### Cut level C



Item No: **DY1355NM-H**  
 Liner: 13 gauge nylon and glassfiber and HPPE  
 Coating: Latex crinkle half coated  
 Color: Grey & Black  
 Size: 7, 8, 9, 10, 11  
 Features: Anti-cut, Anti-slip  
 Application: Mechanic, Automotive assembly, Forest, Agriculture, Craft, Glass handling, Handling sharp parts.





### Cut level 1

Item No: **PVC1560-R**  
 Liner: Cotton interlock  
 Coating: PVC full coated, knit wrist  
 Color: Red  
 Size: 9, 10  
 Features: Durability, Liquid resistant, Anti-slip  
 Application: Agriculture, Construction, Cold storage, Fishing, Warehousing



### Cut level 1

Item No: **PVC7560-R**  
 Liner: Cotton interlock  
 Coating: PVC full coated, gauntlet  
 Color: Red  
 Size: 9, 10  
 Length: 27cm, 30cm, 35cm, 40cm, 45cm  
 Features: Durability, Liquid resistant, Anti-slip  
 Application: Agriculture, Construction, Cold storage, Fishing, Warehousing



### Cut level 1

Item No: **PVC1380-BR**  
 Liner: Cotton  
 Coating: PVC full coated, gauntlet  
 Color: Blue  
 Size: 8, 9, 10, 11  
 Length: 26cm, 30cm, 34cm  
 Features: Durability, Liquid resistant, Anti-slip  
 Application: Agriculture, Construction, Cold storage, Fishing, Warehousing



### Cut level 1

Item No: **PVC1380RR**  
 Liner: Cotton  
 Coating: PVC full coated, gauntlet  
 Color: Dark red  
 Size: 8, 9, 10, 11  
 Length: 26cm, 30cm, 34cm  
 Features: Durability, Liquid resistant, Anti-slip  
 Application: Agriculture, Construction, Cold storage, Fishing, Warehousing



### Cut level 1

Item No: **PVC1380RR-T**  
 Liner: Terry cloth  
 Coating: PVC full coated, gauntlet  
 Color: Dark red  
 Size: 8, 9, 10  
 Length: 12"  
 Features: Durability, Liquid resistant, Anti-slip, Winter use  
 Application: Agriculture, Construction, Cold storage, Fishing, Warehousing



### Cut level 1

Item No: **PVC1380BR-T**  
 Liner: Terry cloth  
 Coating: PVC full coated, gauntlet  
 Color: Blue  
 Size: 8, 9, 10  
 Length: 12"  
 Features: Durability, Liquid resistant, Anti-slip, Winter use  
 Application: Agriculture, Construction, Cold storage, Fishing, Warehousing



### Cut level 1

Item No: **PVC1380BR-LC**  
 Liner: Cotton  
 Coating: PVC full coated with extra long cuff  
 Color: Blue  
 Size: 7, 8, 9, 10  
 Length: 26cm+35cm  
 Features: Durability, Liquid resistant, Anti-slip, Winter use  
 Application: Agriculture, Construction, Cold storage, Fishing, Warehousing



### Cut level 1

Item No: **PVC1380BRKW-T**  
 Liner: Cotton  
 Coating: PVC full coated, knit wrist  
 Color: Brown & Blue  
 Size: 7, 8, 9, 10  
 Length: 26cm+35cm  
 Features: Durability, Liquid resistant, Anti-slip, Winter use  
 Application: Agriculture, Construction, Cold storage, Fishing, Warehousing





### Cut level 1

Item No: **PVC7560-Y**  
 Liner: Cotton interlock  
 Coating: PVC full coated, gauntlet  
 Color: Yellow  
 Size: 9, 10  
 Length: 27cm, 30cm, 35cm  
 Features: Durability, Liquid resistant, Anti-slip  
 Application: Agriculture, Construction, Cold storage, Fishing, Warehousing



### Cut level 1

Item No: **PVC7560-GN**  
 Liner: Cotton interlock and jersey  
 Coating: PVC full coated, gauntlet  
 Color: Green  
 Size: 9, 10  
 Length: 27cm, 30cm, 35cm  
 Features: Durability, Liquid resistant, Anti-slip  
 Application: Agriculture, Construction, Cold storage, Fishing, Warehousing



### Cut level 1

Item No: **PVC7560R-OR**  
 Liner: Cotton interlock  
 Coating: PVC full coated rough finish, gauntlet  
 Color: Orange  
 Size: 9, 10  
 Length: 27cm, 30cm, 35cm  
 Features: Durability, Liquid resistant, Anti-slip  
 Application: Agriculture, Construction, Cold storage, Fishing, Warehousing



### Cut level 1

Item No: **PVC1560HR-BLK**  
 Liner: Cotton interlock  
 Coating: PVC full coated heavy rough finish, knit wrist  
 Color: Black  
 Size: 9, 10  
 Features: Durability, Liquid resistant, Anti-slip  
 Application: Agriculture, Construction, Cold storage, Fishing, Warehousing



### Cut level 1

Item No: **PVC7560HR-BLK**  
 Liner: Cotton interlock  
 Coating: PVC full coated heavy rough finish, gauntlet  
 Color: Black  
 Size: 9, 10  
 Length: 27cm, 30cm, 35cm  
 Features: Durability, Liquid resistant, Anti-slip  
 Application: Agriculture, Construction, Cold storage, Fishing, Warehousing



### Cut level 1

Item No: **SFP180**  
 Liner: 3 layers (interlock, sponge, jersey)  
 Coating: Fluorescent PVC full coated, knit wrist  
 Color: Orange  
 Size: 9, 10  
 Features: Durability, Liquid resistant, Anti-slip  
 Application: Agriculture, Construction, Cold storage, Warehousing



### Cut level 1

Item No: **SFP480**  
 Liner: 3 layers (interlock, sponge, jersey)  
 Coating: Fluorescent PVC full coated, safety cuff  
 Color: Orange  
 Size: 9, 10  
 Features: Durability, Liquid resistant, Anti-slip  
 Application: Agriculture, Construction, Cold storage, Fishing, Warehousing



### Cut level 1

Item No: **SFP790**  
 Liner: 3 layers (interlock, sponge, jersey)  
 Coating: Fluorescent PVC full coated, gauntlet  
 Color: Orange  
 Size: 9, 10  
 Length: 12"  
 Features: Durability, Liquid resistant, Anti-slip  
 Application: Agriculture, Construction, Cold storage, Fishing, Warehousing





- 1 SKN007 7 gauge natural polycotton string knitted gloves
  - 2 SKB007 7 gauge bleached polycotton string knitted gloves
  - 3 SKGR007 7 gauge grey polycotton string knitted gloves
  - 4 SKB00701 7 gauge bleached polycotton string knitted gloves, one side with PVC dots
  - 5 SKB00702 7 gauge bleached polycotton string knitted gloves, both sides with PVC dots
- Size: S, M, L, XL, XXL



- 1 SKBR007 7 gauge brown and bleached polycotton string knitted gloves
  - 2 SKN0010 10 gauge natural polycotton string knitted gloves
  - 3 SKW01301 13 gauge white nylon knitted gloves, one side with PVC dots
  - 4 SKAR007 7 gauge Hi-Viz yellow nappy acrylic knitted gloves, reinforcement on crotch area
- Size: S, M, L, XL, XXL



- 1 B5018C 100% Bleached cotton Interlock, three seams on back with mini PVC dots
  - 2 JS35401 Brown jersey gloves, knit wrist
  - 3 JS35402 Brown jersey gloves with PVC dots, knit wrist
  - 4 JS35404 Zebra jersey gloves, knit wrist
- Size: S, M, L, XL, XXL

## Earplugs



## Glove clips



## Demonstration bag

